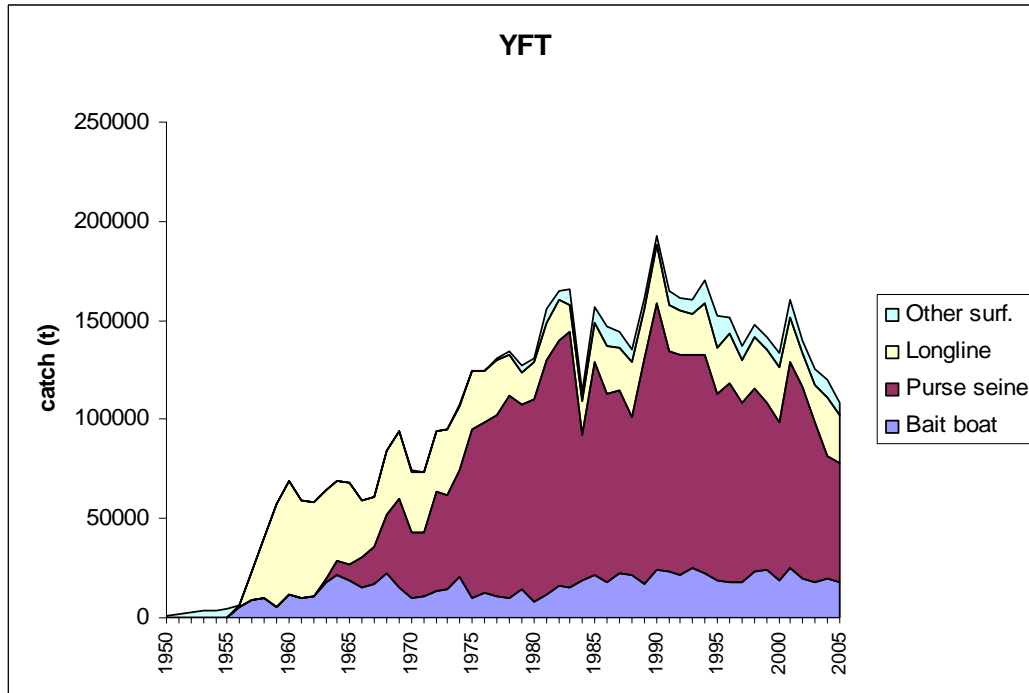
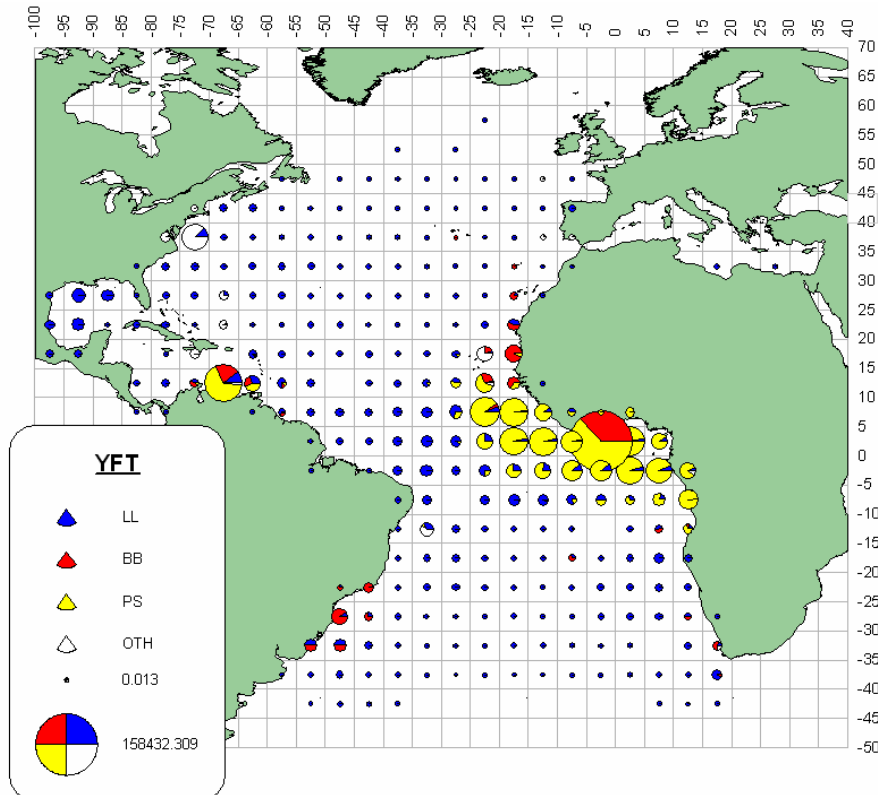


YFT. Table 1 / Tableau 1 / Tabla 1 (...)

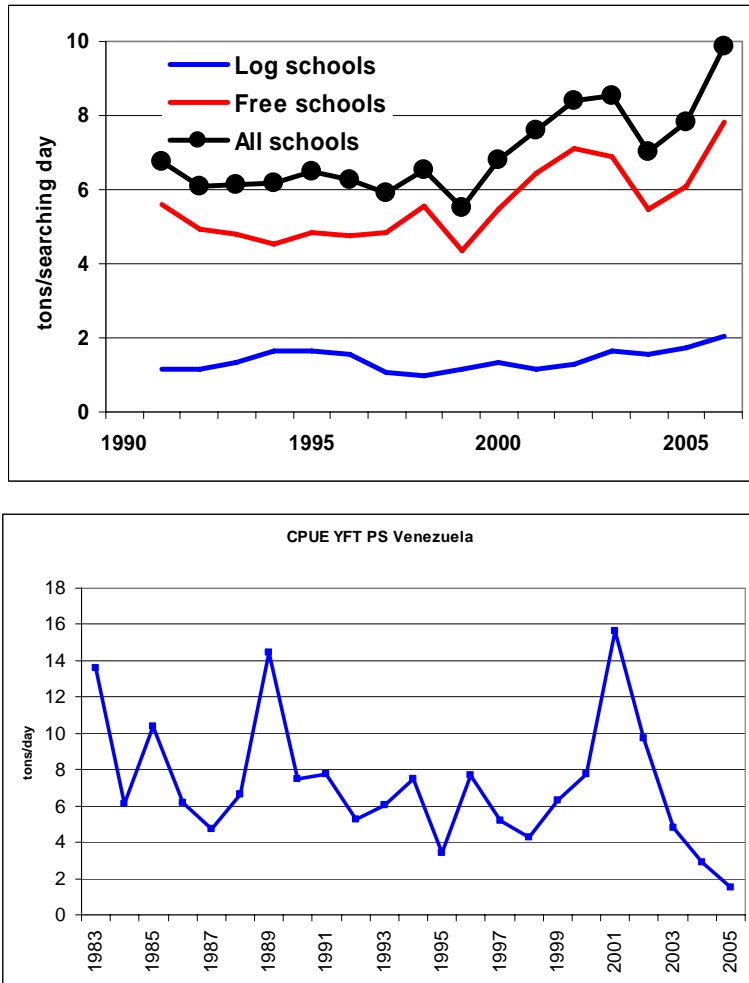
		1982	1983	1984	1985	1986	1987	1988	1989	1990	1991	1992	1993	1994	1995	1996	1997	1998	1999	2000	2001	2002	2003	2004	2005	2006	
	U.S.A.	636	0	0	0	0	0	0	0	0	0	0	0	0	0	0	0	0	0	0	0	0	0	0	0	0	
	U.S.S.R.	1004	1282	2168	3768	1851	1275	3207	4246	3615	0	0	0	0	0	0	0	0	0	0	0	0	0	0	0	0	
	UK.Sta Helena	97	59	80	72	82	93	98	100	92	100	166	171	150	181	151	109	181	116	136	72	9	0	0	0	344	
	Ukraine	0	0	0	0	0	0	0	0	0	215	0	0	0	0	0	0	0	0	0	0	0	0	0	0	0	
	Vanuatu	0	0	0	0	0	0	0	0	0	0	0	0	0	0	0	0	0	0	0	0	0	0	0	24	145	
	Venezuela	0	0	0	634	0	0	0	0	0	0	0	0	0	0	0	0	0	0	0	0	0	0	0	0	0	
AT.W	Argentina	7	0	0	44	23	18	66	33	23	34	1	0	0	0	0	0	0	0	0	0	0	0	327	327		
	Barbados	36	51	90	57	39	57	236	62	89	108	179	161	156	255	160	149	150	155	155	142	115	116	116	116	197	
	Belize	0	0	0	0	0	0	0	0	0	0	0	0	0	0	0	0	0	0	0	0	0	0	0	0	143	
	Brasil	1979	2844	2149	2947	1837	2266	2512	2533	1758	1838	4228	5131	4169	4021	2767	2705	2514	4127	6145	6239	6172	3503	6985	7223	3790	
	Canada	0	0	0	0	2	40	30	7	7	29	25	71	52	174	155	100	57	22	105	125	70	73	304	240	293	
	China P.R.	0	0	0	0	0	0	0	0	0	0	0	0	0	0	0	0	628	655	22	470	435	17	275	74	68	
	Chinese Taipei	407	87	559	780	1156	709	1641	762	5221	2009	2974	2895	2809	2017	2668	1473	1685	1022	1647	2018	1296	1540	1679	1608	622	
	Colombia	3	29	0	180	211	258	206	136	237	92	95	2404	3418	7172	238	46	46	46	46	46	46	46	46	46	46	46
	Cuba	1503	793	2538	1906	2081	1062	98	91	53	18	11	1	14	54	40	40	15	15	0	0	65	65	65	65		
	Dominica	0	0	0	0	0	0	0	0	18	12	23	30	31	9	0	0	80	78	120	169	119	81	119	119	65	
	Dominican Republic	0	0	0	0	0	0	0	0	0	0	0	0	0	0	0	0	89	220	226	226	226	226	226	226		
	EC.España	0	1957	3976	1000	0	0	1	3	2	1462	1314	989	7	4	36	34	46	30	171	0	0	0	0	0	0	
	EC.France	0	0	0	0	0	0	0	0	0	0	0	0	0	0	0	0	0	0	0	0	0	0	0	0	0	
	EC.Portugal	0	0	0	0	0	0	0	0	0	0	0	0	0	0	0	0	0	0	0	1	0	0	0	151	60	
	Grenada	59	169	146	170	506	186	215	235	530	620	595	858	385	410	523	302	484	430	403	759	593	749	460	492	502	
	Jamaica	0	0	0	0	0	0	0	0	0	0	0	0	0	0	21	21	0	0	0	0	0	0	0	0	0	
	Japan	3288	1218	1030	2169	2103	1647	2395	3178	1734	1698	1591	469	589	457	1004	806	1081	1304	1775	1141	571	755	1194	1223	1223	
	Korea, Republic of	2249	1920	989	1655	853	236	120	1055	484	1	45	11	0	84	156	0	0	0	0	0	0	0	0	0	580	279
	Mexico	128	612	1059	562	658	33	283	345	112	433	742	855	1093	1126	771	826	788	1283	1390	1084	1133	1313	1208	1050	938	
	Netherlands Antilles	173	173	173	150	150	160	170	170	170	150	160	170	155	140	130	130	130	130	130	0	0	0	0	0	0	
	Panama	675	62	246	0	0	0	0	0	0	0	0	0	0	0	0	0	0	5	0	0	0	0	0	0	1024	
	Philippines	0	0	0	0	0	0	0	0	0	0	0	0	0	0	0	0	36	106	78	12	79	145	299	299	234	
	Seychelles	0	0	0	0	0	0	0	0	0	0	0	0	0	0	0	0	0	0	32	0	0	0	0	0	0	
	St. Vincent and Grenadines	0	0	0	0	0	0	0	1	40	48	22	65	16	43	37	35	48	38	33	24	884	568	4251	0	2680	
	Sta. Lucia	26	23	56	79	125	76	97	70	58	49	58	92	130	144	110	110	276	123	134	145	94	139	147	172		
	Trinidad and Tobago	0	232	31	0	0	0	1	11	304	543	4	4	120	79	183	223	213	163	112	122	125	186	224	295		
	U.S.A.	1095	2553	2180	9735	9938	9661	11064	8462	5666	6914	6938	6283	8298	8131	7745	7674	5621	7567	7051	6703	5710	7695	6516	5568	7075	
	UK.Bermuda	22	10	11	42	44	25	23	22	15	17	42	58	44	44	67	55	53	59	31	37	48	47	82	61	31	
	UK.Turks and Caicos	0	0	0	0	0	0	0	0	0	0	0	0	0	0	0	0	0	0	0	0	0	0	0	0	0	
	Uruguay	214	357	368	354	270	109	177	64	18	62	74	20	59	53	171	53	88	45	45	90	91	95	204	644	218	
	Vanuatu	0	0	0	0	0	0	0	0	0	0	0	0	0	0	0	0	0	0	0	0	0	0	681	689	661	
	Venezuela	14426	26576	21879	20535	11755	11137	10949	15567	10556	16503	13773	16663	24789	9714	13772	14671	13995	11187	10549	18651	11421	7411	5774	5097	2085	
UNCL area	China P.R.	0	0	0	0	0	0	0	0	0	0	0	139	156	200	124	0	0	0	0	0	0	0	0	0	0	0
	Chinese Taipei	0	0	0	0	0	0	0	0	0	0	0	0	0	0	0	0	0	0	0	0	0	0	0	0	0	0
	EC.España	0	0	0	0	0	0	0	0	0	0	0	0	0	0	0	0	0	0	0	0	0	0	0	0	18	226
	Libya	0	0	0	0	0	0	0	0	0	0	0	0	0	0	0	0	0	0	0	0	0	73	73	73	73	
	Maroc	0	0	0	0	0	0	0	0	0	0	0	0	0	0	0	0	0	0	0	0	79	0	0	0	0	
	NEI (Flag related)	0	754	406	526	956	1297	2324	2780	4100	4318	3836	2671	4404	4202	5962	6100	8339	7409	5269	2883	175	578	0	0	0	
	Panama	0	0	0	0	7222	5147	3431	2496	4149	3519	3594	3134	3422	2588	1954	1156	358	385	0	0	0	0	0	0	0	
	St. Vincent and Grenadines	0	0	0	0	0	0	0	0	0	0	0	0	0	0	0	0	0	0	1956	1341	280	0	0	0	0	
	UK.Turks and Caicos	0	0	0	0	0	0	0	0	0	0	0	0	0	0	0	0	0	0	0	0	0	0	0	0	0	
Discards	AT.W																										
	Mexico	0	0	0	0	0	0	0	0	0	0	0	0	0	0	0	0	0	0	0	0	0	0	0	0	12	
	U.S.A.	0	0	0	0	0	0	0	0	0	0	0	0	0	0	0	0	0	167	0	0	0	0	0	0	0	



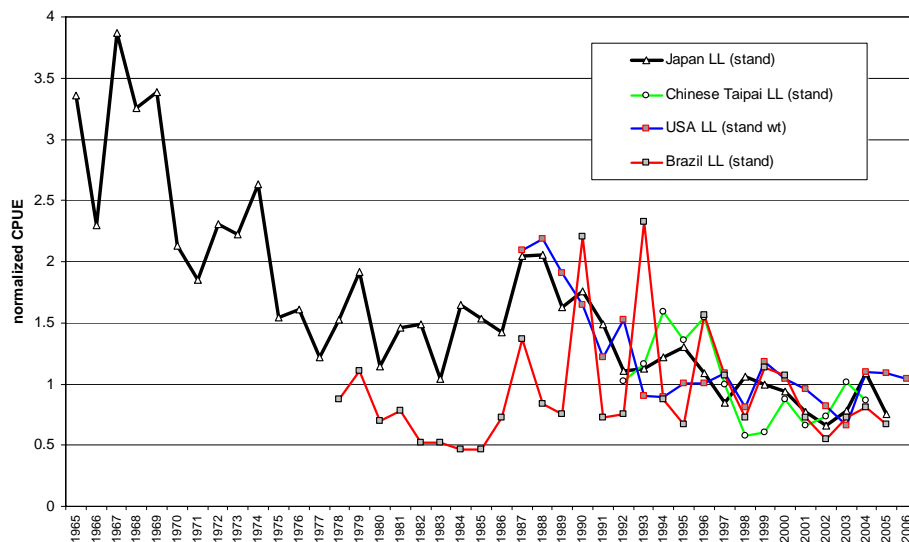
YFT-Figure 1. Estimated annual catch (t) of Atlantic yellowfin tuna by fishing gear, 1950-2006.



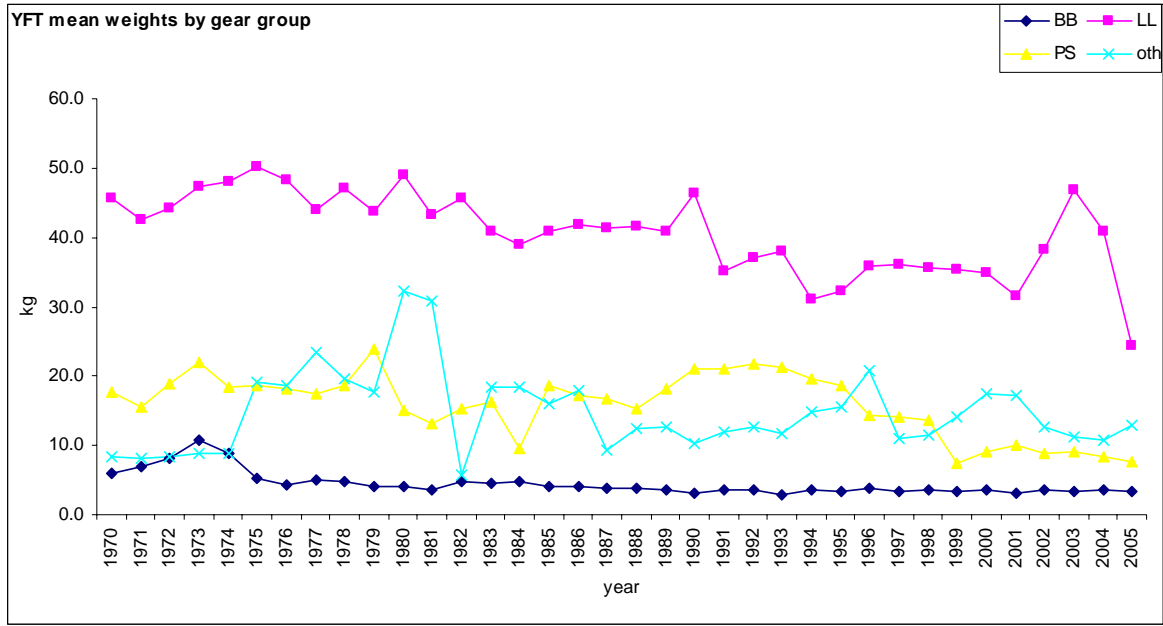
YFT-Figure 2. Geographic distribution of yellowfin tuna catches for most recent years (2000-2004) by major tuna fishery.



YFT-Figure 3. Nominal yellowfin tuna catch per unit effort trends for purse seine fleets from the eastern (top) and western (bottom) Atlantic in tons/searching days. No adjustment has been made for estimated increases in fishing power.



YFT-Figure 4. Standardized Atlantic yellowfin tuna catch per unit effort trends (in numbers) for longline fleets. The Chinese Taipei (numbers) index, although partially standardized, has been truncated to begin in 1992 in order to avoid a period of shifting targets which is not adequately accounted for in the standardization.



YFT-Figure 5. Trend in yellowfin tuna average weight for Atlantic fleets calculated from available catch-at-size data. Purse seine averages are calculated across all set types (floating object and free school).